

December 9, 2004

rough draft

Once there was a very lazy dog.
It was his job to ~~guard~~^{guard} the sheep. But
each day at sunrise, when the sheep
were let out of the barn to graze,
the lazy dog slept on, thinking "Let someone
else do the work." One day, a small lamb
approached him and asked "Why do you not
guard ~~us~~ ^{strenuous} as we graze?" "It's too ~~strenuous~~
work for one of my age," replied the dog
lazily. One day, while the sheep ~~were~~^{appeared}
grazing, a young wolf ~~appeared~~. The
frightened sheep ~~panicked~~^{panicked} and ~~ran~~ in fear. But

in their hurry the sheep ^{tramp} ~~tramp~~

the dog. The young wolf approached

dying dog with a ~~spear~~ curling his lip

"The fool was too lazy to work, and

paid the price," thought the wolf, and

to down the dog in a few bites.

Those who avoid work often pay a price.

~~Those who work are rewarded~~



Solution: Wolf
Scares Sheep
And Sheep
Run, But
They
Trampeled
The Dog In
The Process



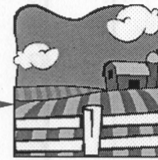
Problem: Lazy
Dog Won't
Herd Or
Gaurd The
Sheep



Plot:
Lazy dog
won't work, so
one day when
he is sleeping
and a wolf
comes, the
sheep trample
the dog while
they ran from
the wolf



Title: The Lazy
Dog



Setting:
Barnyard

Moral:
Those
who work
are
rewarded



Characters:
The Sheep,
The Lazy
Dog, Wolf

Aesop's Fables



Name _____

Group # 614

Part 1

Directions: You have just viewed 5 videos on Aesop's Fables. Choose 3 of the videos and answer the following questions. You may need to review the videos.

Video #1

Title The Boy Who Cried Wolf

Identify the following literary elements of the fable.

Setting: Sheep pasture, Village

Characters: Shepherd boy, Villagers, Wolf, and Sheep

Conflict: A boy keeps telling villagers that there

is a wolf after the sheep as a prank, when there really is a
wolf the villagers don't come.

Solution: _____

No Solution

Moral or Lesson: When you say what isn't true,
people lose their faith in you

Video #2

Title The Horse's Mistake

Identify the following literary elements of the fable.

Setting: forest

Characters: the horse, the donkey, and the farmer

Conflict: The horse wouldn't help the donkey work.

Solution: When the donkey gave out the horse had to carry the donkey as well as the load. The horse learned his lesson.

Moral or Lesson: For yours and everyone else's sake
COOPERATE!

Video #3

Title The Tortoise and the Hare

Identify the following literary elements of the fable.

Setting: forest

Characters: the tortoise and the hare

Conflict: The tortoise and the hare race because the hare brags about his speed.

Solution: The hare fell asleep and the tortoise won

Moral or Lesson: if you want to win the race use a determined, steady pace.



Part 2

Directions: You have just read 5 fables. Choose 2 of the fables and answer the following questions.

Fable #1

Title The Wolf and the Crane

Identify the following literary elements of the fable.

Setting: No setting

Characters: Wolf, Crane

Conflict: Wolf wants Crane to take a bone out of his throat

Solution: No solution

Moral or Lesson: don't serving the wicked, expect
no reward, and be thankful if you escape
for your pains.

Fable #2

Title The farmer and the Snake

Identify the following literary elements of the fable.

Setting: farm

Characters: Snake, Farmer

Conflict: The farmer finds snake frozen
and sticks the snake in his house

Solution: The snake bites him

Writing Process	Student devotes a lot of time and effort to the writing process (prewriting, drafting, reviewing, and editing). Works hard to make the story wonderful.	Student devotes sufficient time and effort to the writing process (prewriting, drafting, reviewing, and editing). Works and gets the job done.	Student devotes some time and effort to the writing process but was not very thorough. Does enough to get by.	Student devotes little time and effort to the writing process. Doesn't seem to care.
Creativity	The story contains many creative details and/or descriptions that contribute to the reader's enjoyment. The author has really used his imagination.	The story contains a few creative details and/or descriptions that contribute to the reader's enjoyment. The author has used his imagination.	The story contains a few creative details and/or descriptions, but they distract from the story. The author has tried to use his imagination.	There is little evidence of creativity in the story. The author does not seem to have used much imagination.
Illustrations	Original illustrations are detailed, attractive, creative and relate to the text on the page.	Original illustrations are somewhat detailed, attractive, and relate to the text on the page.	Original illustrations relate to the text on the page.	Illustrations are not present OR they are not original.
Characters	The main characters are named and clearly described in text as well as pictures. Most readers could describe the characters accurately.	The main characters are named and described. Most readers would have some idea of what the characters looked like.	The main characters are named. The reader knows very little about the characters.	It is hard to tell who the main characters are.
Problem/Conflict	It is very easy for the reader to understand the problem the main characters face and why it is a problem.	It is fairly easy for the reader to understand the problem the main characters face and why it is a problem.	It is fairly easy for the reader to understand the problem the main characters face but it is not clear why it is a problem.	It is not clear what problem the main characters face.
Solution/Resolution	The solution to the character's problem is easy to understand, and is logical. There are no loose ends.	The solution to the character's problem is easy to understand, and is somewhat logical.	The solution to the character's problem is a little hard to understand.	No solution is attempted or it is impossible to understand.
Spelling and Punctuation	There are no spelling or punctuation errors in the final draft. Character and place names that the author invented are spelled consistently throughout.	There is one spelling or punctuation error in the final draft.	There are 2-3 spelling and punctuation errors in the final draft.	The final draft has more than 3 spelling and punctuation errors.

name [REDACTED]

fable Rubric

100

100

Rubric for Graphic Organizers - Inspiration Diagrams

CATEGORY	Exemplary	Proficient	Developing
Arrangement of Concepts	Main concept easily identified; subconcepts branch appropriately from main idea	Main concept easily identified; most subconcepts branch from main idea.	Main concept not clearly identified; subconcepts don't consistently branch from main idea.
Links and Linking Lines	Linking lines connect related terms/point in correct direction; linking words accurately describe relationship between concepts; hyperlinks effectively used	Most linking lines connect properly; most linking words accurately describe the relationship between concepts; most hyperlinks effectively used.	Linking lines not always pointing in correct direction; linking words don't clarify relationships between concepts; hyperlinks don't function or fail to enhance the topic.
Graphics	Graphics used appropriately; greatly enhance the topic and aid in comprehension; are clear, crisp and well situated on the page.	Graphics used appropriately most of the time; most graphics selected enhance the topic, are of good quality, and are situated in logical places on the page.	Graphics used inappropriately and excessively; graphics poorly selected and don't enhance the topic; some graphics are blurry and ill-placed.
Content	Reflects essential information; is logically arranged; concepts succinctly presented; no mis-spellings or grammatical errors	Reflects most of the essential information; is generally logically arranged; concepts presented without too many excess words; fewer than three mis-spellings or grammatical errors.	Contains extraneous information; is not logically arranged; contains numerous spelling and grammatical errors.
Text	Easy to read/ appropriately sized; no more than three different fonts; amount of text is appropriate for intended audience; boldface used for emphasis.	Most text is easy to read; uses no more than four different fonts; amount of text generally fits intended audience.	Font too small to read easily; more than four different fonts used; text amount is excessive for intended audience.
Design	Clean design; high visual appeal; four or fewer symbol shapes; fits page without a lot of scrolling; color used effectively for emphasis.	Design is fairly clean, with a few exceptions; diagram has visual appeal; four or fewer symbol shapes; fits page well; uses color effectively most of time.	Cluttered design; low in visual appeal; requires a lot of scrolling to view entire diagram; choice of colors lacks visual appeal and impedes comprehension.



December 13, 2004

final copy

The Lazy Dog

Once there was a very lazy dog. It was his job to guard the sheep. But each day at sunrise, when the sheep were let out of the barn to graze, the lazy dog slept on, thinking "Let someone else do the work." One day, a small lamb approached him and asked "Why do you not guard us as we graze?"

"It's too strenuous work for one of my ages," replied the dog lazily.

One day, while the sheep were grazing a young wolf appeared. The frightened sheep panicked and ran in fear. But in their hurry the sheep trampled the dog. The young wolf approached the dying dog with a sneer curling his lips.

"The fool was too lazy to work, and he paid the price," thought the wolf and proceeded to down the dog in a few bites.

Moral: Those who avoid work often pay a price in the end.