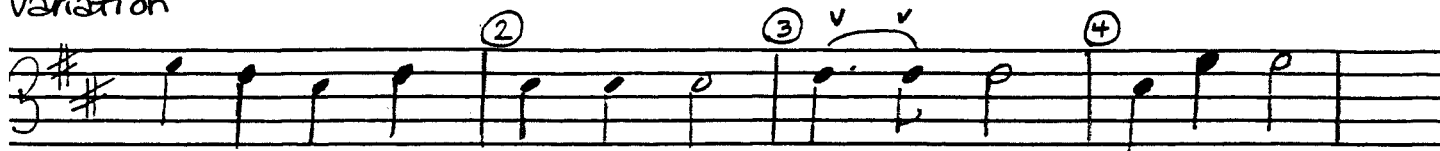


## Mary Had a Little Lamb - Theme



### Variation



### Rubric explanations:

#### Peer Evaluation:

- Each group evaluated one other group. They listened to the group and were given a copy of the group's work to use in their evaluation.
- The second part of this evaluation is an evaluation of the student's ability to distinguish the compositional devices used by each of the other groups.

#### Self Evaluation

- Each group evaluated their own performance.
- Each individual assessed his/her own understanding of the compositional concepts.
- Each individual assessed the project.

#### Teacher Evaluation

- The student evaluations were assessed based on their completeness and the thought put into the answers.
- The peer evaluations were assessed based on their completeness and the thought put into the answers.
- The two analyzation categories were assessed based on the work done in the student self and peer evaluations.
- The composition itself was evaluated based on the following of the guidelines only. No musical judgments were assessed. Performances were evaluated by peer groups as part of that evaluation.